

TRUE ARMYWORM LIFE CYCLE

Agriculture is an important industry in the Cariboo, and invasive species are a big problem to producers. A changing climate may increase their spread, and even allow new species to move into the region!

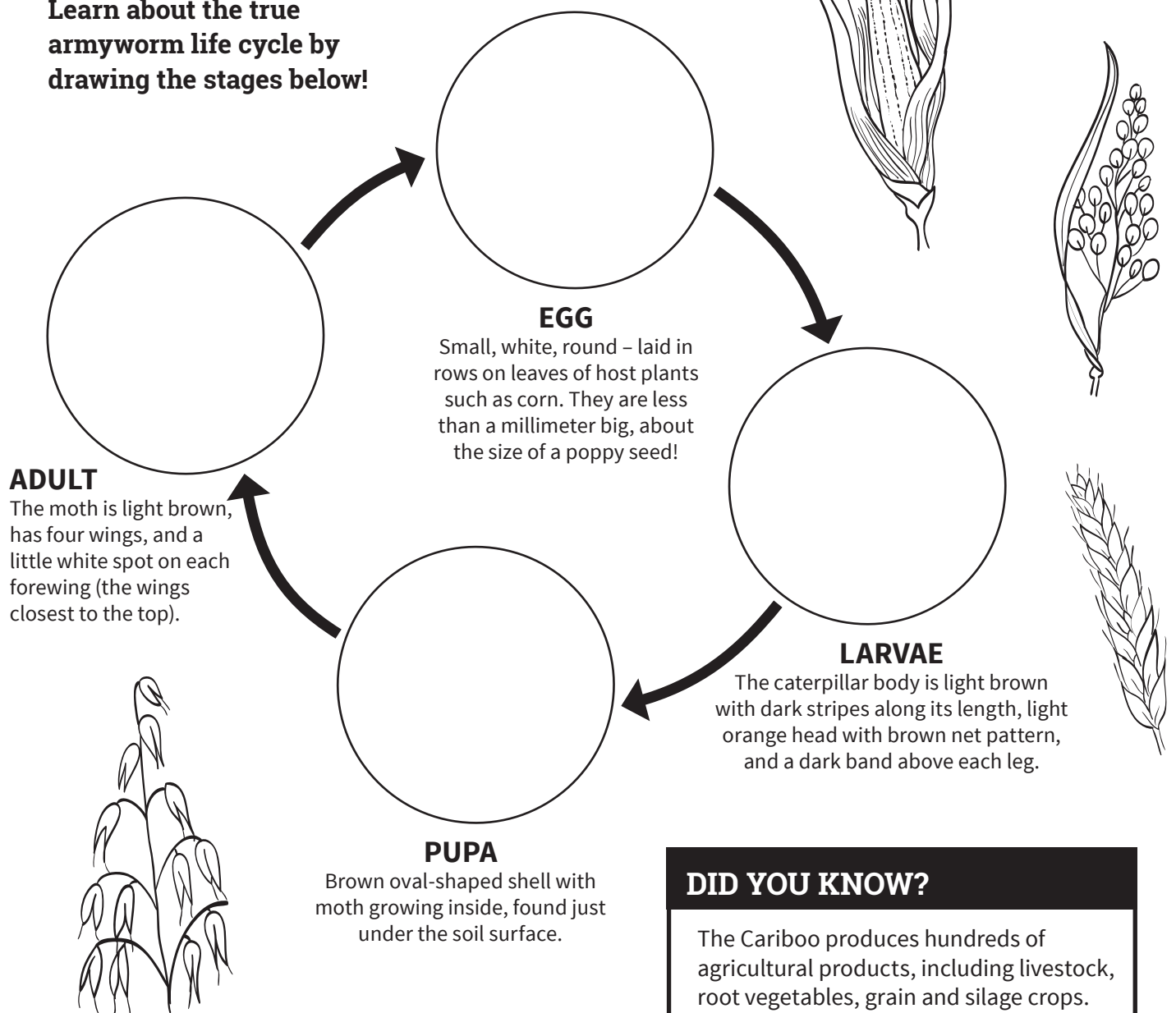
Keep your eyes open for the invasive true armyworm!

Its larvae damages grass, hay, cereal, and corn crops by eating the leaves. During late spring, true armyworm moths migrate from the southern United States and Mexico to Canada on wind currents. Find some photos of this pest at <https://bit.ly/2UJ6Z4t> or by scanning the QR code.

Take Action! Report sightings using the FREE **Report Invasives** phone app – check it out at www.gov.bc.ca/invasive-species



Learn about the true armyworm life cycle by drawing the stages below!



DID YOU KNOW?

The Cariboo produces hundreds of agricultural products, including livestock, root vegetables, grain and silage crops.