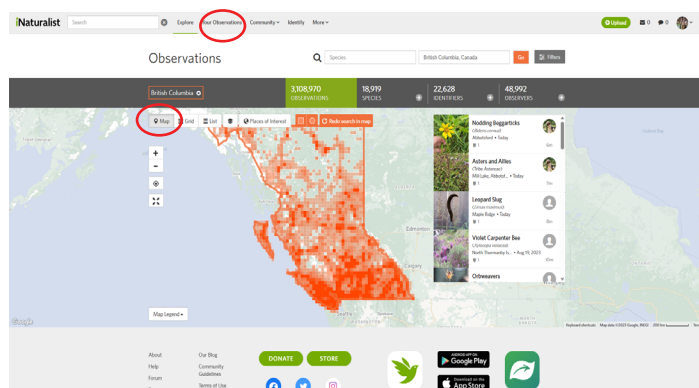


Mapping Biodiversity Changes: How to Create a GIF: Invasive Rabbits

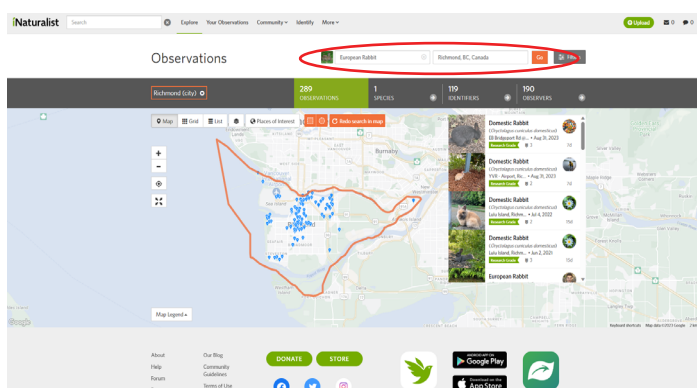
Step one

- Go to [iNaturalist.ca](https://www.inaturalist.ca) and select “Explore” from the top menu bar.
- Select “Map” to view observations on the map if this view does not show initially.



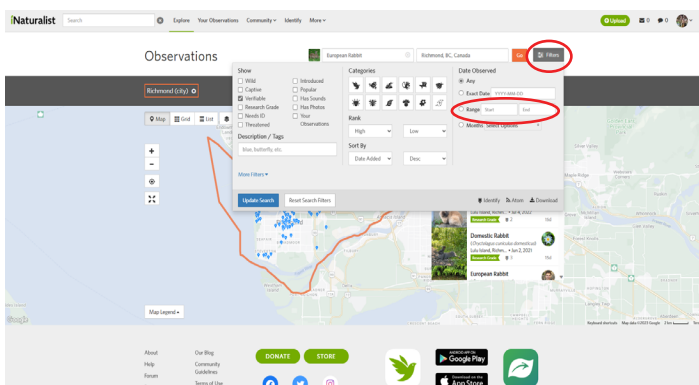
Step two

- Using the “Species” search bar, search for “European Rabbits”
- Using the “Location” search bar, filter the results by specifying “Richmond, BC”



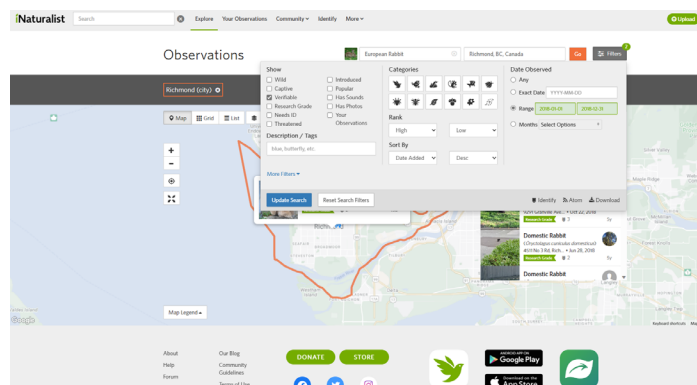
Step three

- Click on the “Filter” tab and filter observations by date observed. Use “Range” and change the end date as you go. Start with the oldest date you want to include.



Step four

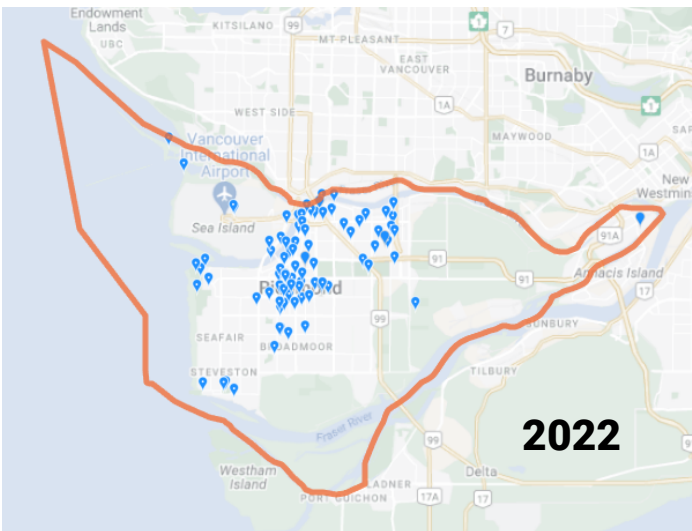
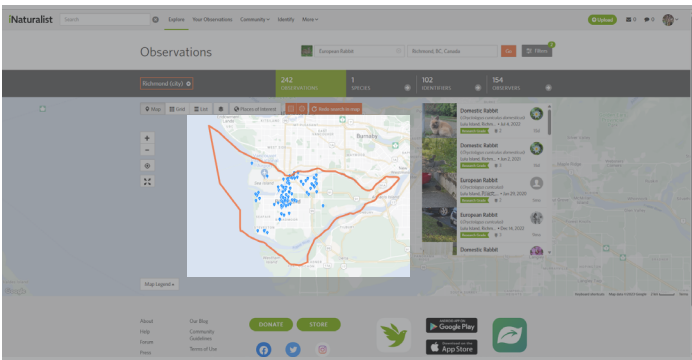
- Take a screenshot before changing the end date each time. Continue this process until you have reached the most recent date to include. For this example, we took screenshots from 2017 to 2022.



Mapping Biodiversity Changes: How to Create a GIF: Invasive Rabbits

Step five

- Edit your screenshots to add any text or icons and crop the images to your desired size. For this example, the GIF creator website also added the text and cropped the image.



Step six

- Adjust the timing of the frames to match the desired pacing, save and download the GIF!

