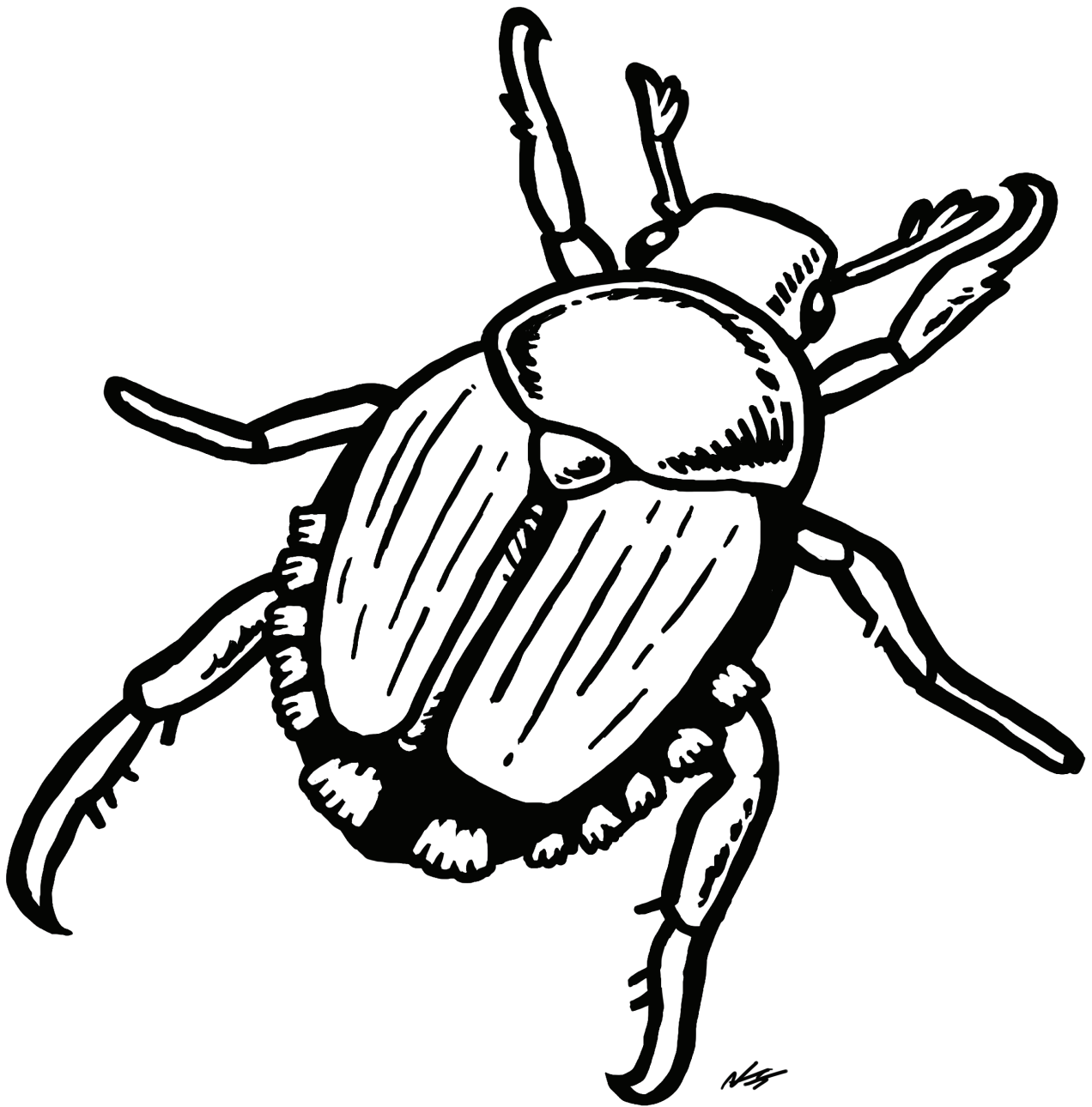


Japanese beetle (*Popillia japonica*)

INVASIVE



FAST FACTS

- » They have six distinctive tufts of white hairs on either side of its abdomen.
- » Adult beetles are tiny! They are up 1 cm long—about the size of a grain of rice!
- » They are dormant during the winter and become active in June.

Japanese beetle (*Popillia japonica*) is an invasive pest in North America and poses a severe threat to ecosystems and industries. Adult Japanese beetles can feed on over 300 species of plants, including many species that are important to farmers and gardeners. Beetle larvae live underground and feed exclusively on the roots of turf and grasses, leaving patches of brown grass in healthy lawns.

FUNDED BY
CANADA
SERVICE
CORPS

Canada

isc Invasive Species
Council of BC